



**Water Monitoring Result at M5B - Central Cooling Water Intake Group
Mid-Flood Tide**

Date	Time	Weather Condition	Sampling Depth		Water Temperature			pH			Salinity			DO Saturation			DO			Turbidity			Suspended Solids	
					°C		-		ppt		%		mg/L		NTU		mg/L							
			m	Value	Average	Value	Average	Value	Average	Value	Average	Value	Average	Value	Average	Value	Average	Value	Average	Value	Average			
2/9/15	21:01	Cloudy	Middle	3.5	25.50	25.50	25.55	8.16	8.16	8.17	31.93	31.93	31.93	74.7	75.2	75.0	5.09	5.13	5.11	6.99	7.03	7.04	8	8.00
	21:02		Middle	3.5	25.60	25.60		8.17	8.17		31.93	31.93		75.2	74.8		5.13	5.10		7.09	7.06		8	
4/9/15	10:12	Fine	Middle	3.5	26.50	26.50	26.65	8.24	8.24	8.23	31.45	31.45	31.44	74.7	75.9	74.5	5.02	5.10	5.00	8.26	8.28	8.28	8	8.50
	10:14		Middle	3.5	26.80	26.80		8.22	8.22		31.42	31.42		74.8	72.5		5.02	4.87		8.29	8.29		9	
7/9/15	14:39	Fine	Middle	3.5	27.50	27.50	27.45	8.10	8.10	8.11	30.03	30.03	30.06	69.7	70.5	70.8	4.67	4.72	4.74	5.47	5.42	5.45	6	6.00
	14:41		Middle	3.5	27.40	27.40		8.12	8.12		30.08	30.08		71.3	71.8		4.77	4.80		5.46	5.46		6	
9/9/15	15:52	Fine	Middle	3.5	26.60	26.60	26.65	8.20	8.20	8.21	31.06	31.06	31.05	78.6	79.7	78.1	5.30	5.37	5.26	5.91	6.10	6.08	3	3.50
	15:54		Middle	3.5	26.70	26.70		8.21	8.21		31.04	31.04		78.0	76.0		5.26	5.12		6.18	6.14		4	
11/9/15	10:04	Fine	Middle	3.5	26.90	26.90	26.70	8.28	8.28	8.29	30.17	30.17	30.15	81.4	80.6	79.5	5.48	5.42	5.34	7.56	7.55	7.60	6	6.00
	10:06		Middle	3.5	26.50	26.50		8.30	8.30		30.12	30.12		78.1	77.8		5.25	5.22		7.68	7.62		6	
14/9/15	20:40	Fine	Middle	3.5	27.40	27.40	27.40	8.29	8.29	8.29	32.41	32.41	32.41	72.2	73.7	73.3	4.76	4.82	4.82	14.05	13.55	13.67	12	12.50
	20:41		Middle	3.5	27.40	27.40		8.29	8.29		32.41	32.41		73.5	73.7		4.84	4.86		13.52	13.55		13	
16/9/15	21:38	Cloudy	Middle	3.5	27.70	27.70	27.75	8.26	8.26	8.27	32.52	32.52	32.52	72.9	73.7	73.0	4.78	4.93	4.81	15.48	15.50	15.11	10	11.00
	21:39		Middle	3.5	27.80	27.80		8.27	8.27		32.52	32.52		72.2	73.2		4.73	4.79		14.92	14.53		12	
18/9/15	21:20	Fine	Middle	3.5	27.80	27.80	27.83	8.22	8.22	8.22	32.14	32.14	32.14	73.2	75.6	74.9	4.80	4.99	4.92	11.47	11.32	11.27	10	10.00
	21:21		Middle	3.5	27.90	27.80		8.22	8.22		32.14	32.14		74.9	76.0		4.91	4.98		11.20	11.07		10	
22/9/15	15:17	Fine	Middle	3.5	28.70	28.70	28.70	8.25	8.25	8.25	30.83	30.83	30.83	70.0	67.9	68.1	4.56	4.43	4.44	7.07	7.08	7.07	4	3.50
	15:19		Middle	3.5	28.70	28.70		8.25	8.25		30.82	30.82		67.3	67.0		4.39	4.37		7.07	7.07		3	
24/9/15	15:06	Fine	Middle	3.5	29.50	29.50	29.60	8.23	8.23	8.24	30.54	30.54	30.53	77.6	77.7	77.2	4.99	5.00	4.97	8.55	8.55	8.55	6	6.00
	15:08		Middle	3.5	29.70	29.70		8.25	8.25		30.52	30.52		77.5	76.1		4.98	4.89		8.55	8.54		6	
26/9/15	-	Amber Rainstorm	Middle	-	-	-	#DIV/0!	-	-	#DIV/0!	-	-	#DIV/0!	-	-	#DIV/0!	-	-	#DIV/0!	-	-	#DIV/0!	-	#DIV/0!
	-		Middle	-	-	-		-	-		-	-		-	-		-	-		-	-		-	
28/9/15	16:00	Sunny	Middle	3.0	29.60	29.60	29.60	8.25	8.25	8.25	31.11	31.11	31.11	73.4	74.1	73.3	4.71	4.75	4.70	16.79	16.36	16.64	12	12.50
	16:01		Middle	3.0	29.60	29.60		8.26	8.25		31.11	31.11		73.3	72.4		4.70	4.65		16.72	16.68		13	
30/9/15	20:40	Cloudy	Middle	3.5	28.70	28.70	28.70	8.26	8.27	8.27	31.37	31.37	31.38	71.1	71.4	71.4	4.63	4.64	4.64	18.00	17.98	17.30	11	11.00
	20:41		Middle	3.5	28.70	28.70		8.27	8.27		31.39	31.39		71.4	71.5		4.64	4.65		16.47	16.76		11	

Remarks:

Single underline denotes exceedance over Action Level.

Double underline denotes exceedance over Limit Level.

Due to the hoisting of Amber Rainstorm Warning Signal, the water quality monitoring event in 26 September 2015 during flood tide was cancelled.



**Water Monitoring Result at M5B - Central Colling Water Intake Group
Mid-Ebb Tide**

Date	Time	Weather Condition	Sampling Depth		Water Temperature			pH			Salinity			DO Saturation			DO			Turbidity			Suspended Solids	
					°C		-		ppt		%		mg/L		NTU		mg/L							
			m	Value	Average	Value	Average	Value	Average	Value	Average	Value	Average	Value	Average	Value	Average	Value	Average	Value	Average			
2/9/15	14:31	Cloudy	Middle	3.5	25.70	25.70	25.65	8.22	8.22	8.22	29.47	29.47	29.47	74.5	73.1	72.2	5.16	5.06	5.00	6.06	6.14	6.07	5	5.00
	14:33		Middle	3.5	25.60	25.60		8.22	8.22		29.46	29.46		71.1	70.1		4.92	4.85		6.00	6.08		5	
4/9/15	15:59	Fine	Middle	3.5	27.30	27.30	27.50	8.09	8.09	8.12	31.53	31.53	31.51	76.5	81.0	79.7	5.08	5.37	5.28	6.71	6.70	6.62	5	5.00
	16:01		Middle	3.5	27.70	27.70		8.14	8.14		31.49	31.49		82.9	78.4		5.50	5.18		6.54	6.54		5	
7/9/15	8:39	Fine	Middle	3.5	27.30	27.30	27.35	8.24	8.24	8.24	29.39	29.39	29.36	82.1	78.7	78.3	5.52	5.29	5.26	5.11	4.68	4.77	4	3.50
	8:41		Middle	3.5	27.40	27.40		8.24	8.24		29.32	29.32		76.5	75.8		5.14	5.10		4.68	4.60		3	
9/9/15	10:15	Fine	Middle	3.5	26.80	26.80	26.80	8.19	8.19	8.21	30.85	30.85	30.85	91.4	93.5	92.8	6.15	6.29	6.24	3.99	3.98	3.97	<2	<2
	10:17		Middle	3.5	26.80	26.80		8.22	8.22		30.84	30.84		92.4	93.7		6.21	6.30		3.98	3.94		<2	
11/9/15	15:54	Fine	Middle	3.5	26.90	26.90	26.90	8.27	8.27	8.28	31.48	31.48	31.46	79.6	79.4	79.3	5.32	5.31	5.30	12.94	12.92	12.88	14	<u>14.50</u>
	15:56		Middle	3.5	26.90	26.90		8.28	8.28		31.44	31.44		79.5	78.8		5.31	5.27		12.85	12.81		15	
14/9/15	14:19	Fine	Middle	3.5	28.00	28.00	28.10	8.24	8.24	8.27	32.07	32.07	32.05	75.0	76.2	76.2	4.90	4.98	4.98	9.04	8.90	8.99	8	8.00
	14:21		Middle	3.5	28.20	28.20		8.29	8.29		32.02	32.02		76.1	77.3		4.97	5.06		8.97	9.04		8	
16/9/15	14:05	Fine	Middle	3.5	28.60	28.60	28.50	8.27	8.27	8.28	32.25	32.29	32.27	77.0	74.7	73.6	5.01	4.86	4.81	8.84	8.77	8.79	6	6.50
	14:07		Middle	3.5	28.40	28.40		8.29	8.29		32.27	32.27		72.6	70.2		4.72	4.66		8.77	8.77		7	
18/9/15	14:42	Fine	Middle	3.5	28.60	28.60	28.75	8.21	8.21	8.22	32.00	32.00	31.99	80.8	80.0	78.6	5.23	5.19	5.09	8.22	8.22	8.21	6	6.00
	14:44		Middle	3.5	28.90	28.90		8.22	8.24		31.98	31.98		75.0	78.4		4.85	5.07		8.23	8.16		6	
22/9/15	6:00	Cloudy	Middle	3.5	27.70	27.70	27.70	8.20	8.20	8.20	30.39	30.39	30.39	75.1	75.7	74.3	4.99	5.03	4.94	3.05	3.02	3.09	<2	<2
	6:01		Middle	3.5	27.70	27.70		8.20	8.20		30.39	30.39		73.5	73.0		4.88	4.84		3.13	3.16		<2	
24/9/15	8:53	Fine	Middle	3.5	28.70	28.70	28.75	8.28	8.28	8.29	29.69	29.67	29.82	71.5	71.8	71.6	4.68	4.70	4.69	4.40	4.40	4.43	3	3.00
	8:55		Middle	3.5	28.80	28.80		8.29	8.29		29.96	29.96		71.7	71.4		4.69	4.67		4.40	4.53		3	
26/9/15	10:24	Fine	Middle	3.5	29.20	29.20	29.25	8.33	8.33	8.34	30.15	30.15	30.14	71.4	69.6	69.4	4.63	4.81	<u>4.57</u>	7.77	7.77	7.77	4	4.50
	10:26		Middle	3.5	29.30	29.30		8.34	8.34		30.12	30.12		68.8	67.8		4.46	4.39		7.77	7.78		5	
28/9/15	11:30	Sunny	Middle	3.5	29.60	29.60	29.60	8.30	8.30	8.30	31.60	31.60	31.60	78.3	77.0	78.3	5.01	4.93	5.01	11.48	11.57	11.34	8	8.50
	11:31		Middle	3.5	29.60	29.60		8.30	8.30		31.60	31.60		78.6	79.1		5.03	5.07		11.20	11.10		9	
30/9/15	14:30	Fine	Middle	3.5	30.00	30.00	30.00	8.19	8.19	8.21	31.42	31.42	31.40	85.3	82.2	84.0	5.42	5.23	5.33	8.39	8.22	8.25	8	8.00
	14:32		Middle	3.5	30.00	30.00		8.23	8.23		31.38	31.38		84.4	84.0		5.35	5.32		8.22	8.16		8	

Remarks:
Single underline denotes exceedance over Action Level.
Double underline denotes exceedance over Limit Level.



**Water Monitoring Result at Culvert J - Reference Station
Mid-Flood Tide**

Date	Time	Weather Condition	Sampling Depth		Water Temperature			pH			Salinity			DO Saturation			DO			Turbidity			Suspended Solids	
			m		°C		-		ppt		%		mg/L		NTU		mg/L							
					Value	Average	Value	Average	Value	Average	Value	Average	Value	Average	Value	Average	Value	Average	Value	Average				
2/9/15	21:30	Cloudy	Middle	3.0	25.60	25.60	25.60	8.20	8.20	8.20	29.79	29.79	29.79	61.8	63.2	62.6	4.27	4.35	4.32	10.30	10.42	10.29	7	6.50
	21:31		Middle	3.0	25.60	25.60		8.19	8.19		29.79	29.79		62.3	62.9		4.30	4.35		10.38	10.07		6	
4/9/15	10:16	Fine	Middle	3.5	26.90	26.90	26.70	8.21	8.21	8.21	28.47	28.47	28.47	72.8	73.3	72.4	4.92	4.95	4.89	9.11	9.11	9.11	9	8.00
	10:18		Middle	3.5	26.50	26.50		8.20	8.20		28.47	28.47		72.7	70.8		4.90	4.78		9.11	9.11		7	
7/9/15	14:35	Fine	Middle	3.5	27.80	27.80	27.90	8.08	8.08	8.09	28.99	28.99	28.97	72.4	68.6	70.6	4.83	4.57	4.71	6.87	6.89	6.91	6	5.50
	14:37		Middle	3.5	28.00	28.00		8.10	8.10		28.94	28.94		70.6	70.9		4.70	4.73		6.95	6.93		5	
9/9/15	15:48	Fine	Middle	3.5	27.10	27.10	27.10	8.19	8.19	8.19	30.32	30.32	30.30	70.0	68.9	69.0	4.70	4.63	4.63	6.82	6.88	6.81	3	3.50
	15:50		Middle	3.5	27.10	27.10		8.19	8.19		30.27	30.27		68.5	68.4		4.60	4.60		6.84	6.71		4	
11/9/15	10:00	Fine	Middle	3.5	26.60	26.60	26.70	8.26	8.26	8.27	32.01	32.01	31.97	76.9	75.2	74.3	5.15	5.03	4.97	6.91	7.06	7.00	6	5.00
	10:02		Middle	3.5	26.80	26.80		8.27	8.27		31.92	31.92		72.7	72.4		4.85	4.83		7.07	6.97		4	
14/9/15	20:48	Fine	Middle	3.0	27.00	27.00	27.00	8.30	8.30	8.30	32.19	32.19	32.19	70.1	70.7	70.4	4.66	4.69	4.67	11.05	11.09	11.07	9	8.50
	20:49		Middle	3.0	27.00	27.00		8.30	8.30		32.19	32.19		70.6	70.0		4.69	4.65		10.92	11.23		8	
16/9/15	21:51	Cloudy	Middle	3.0	27.70	27.70	27.75	8.26	8.26	8.26	30.40	30.40	30.40	59.1	59.5	59.2	3.92	3.95	3.93	13.01	12.72	12.67	7	6.50
	21:52		Middle	3.0	27.80	27.80		8.25	8.26		30.39	30.39		59.2	59.1		3.93	3.92		12.45	12.49		6	
18/9/15	21:33	Fine	Middle	3.0	27.60	27.60	27.65	8.23	8.23	8.21	30.11	30.11	30.11	55.8	56.0	55.4	3.71	3.73	3.69	16.90	16.43	17.58	6	6.50
	21:34		Middle	3.0	27.70	27.70		8.19	8.19		30.10	30.10		55.2	54.7		3.67	3.64		19.98	17.00		7	
22/9/15	15:13	Fine	Middle	3.5	28.80	28.80	28.80	8.25	8.25	8.25	30.72	30.72	30.72	74.2	73.3	73.8	4.85	4.77	4.81	7.29	7.24	7.27	3	3.00
	15:15		Middle	3.5	28.80	28.80		8.24	8.24		30.71	30.71		73.8	74.0		4.81	4.81		7.22	7.33		3	
24/9/15	15:03	Fine	Middle	3.5	30.00	30.00	30.30	8.26	8.26	8.25	27.91	27.91	27.90	62.7	61.5	59.5	4.05	3.95	3.84	10.42	10.42	10.35	9	8.00
	15:04		Middle	3.5	30.60	30.60		8.23	8.23		27.89	27.89		57.3	56.5		3.70	3.65		10.42	10.14		7	
26/9/15	-	Amber Rainstorm	Middle	-	-	-	#DIV/0!	-	-	#DIV/0!	-	-	#DIV/0!	-	-	#DIV/0!	-	-	#DIV/0!	-	-	#DIV/0!	-	#DIV/0!
	-		Middle	-	-	-		-	-		-	-		-	-		-	-		-	-		-	
28/9/15	16:10	Sunny	Middle	2.5	29.30	29.30	29.25	8.25	8.25	8.23	27.60	27.60	27.30	53.0	54.2	53.8	3.48	3.57	3.54	17.41	17.83	17.61	11	10.50
	16:11		Middle	2.5	29.20	29.20		8.20	8.20		27.00	27.00		54.2	53.9		3.57	3.54		17.69	17.49		10	
30/9/15	20:47	Cloudy	Middle	3.0	28.60	28.60	28.60	8.24	8.24	8.24	29.82	29.82	29.82	53.7	54.3	54.2	3.53	3.56	3.56	18.94	18.13	18.81	9	9.50
	20:48		Middle	3.0	28.60	28.60		8.23	8.23		29.82	29.82		54.4	54.5		3.57	3.58		19.06	19.10		10	

Remarks:

Due to the hoisting of Amber Rainstorm Warning Signal, the water quality monitoring event in 26 September 2015 during flood tide was cancelled.

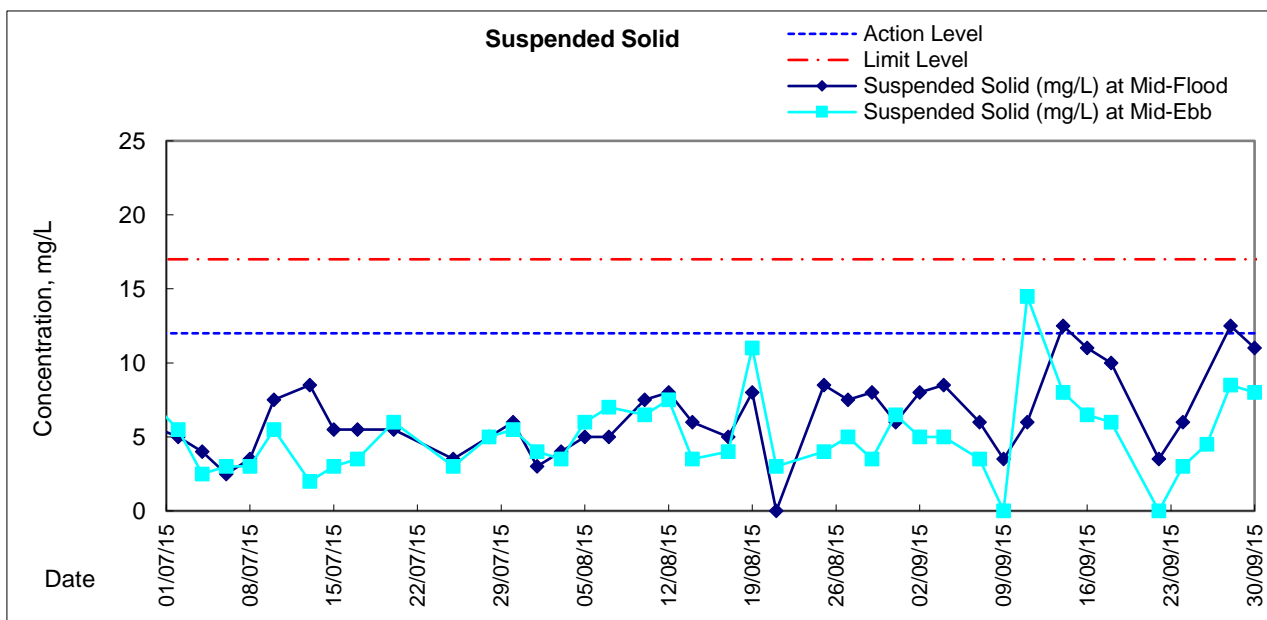
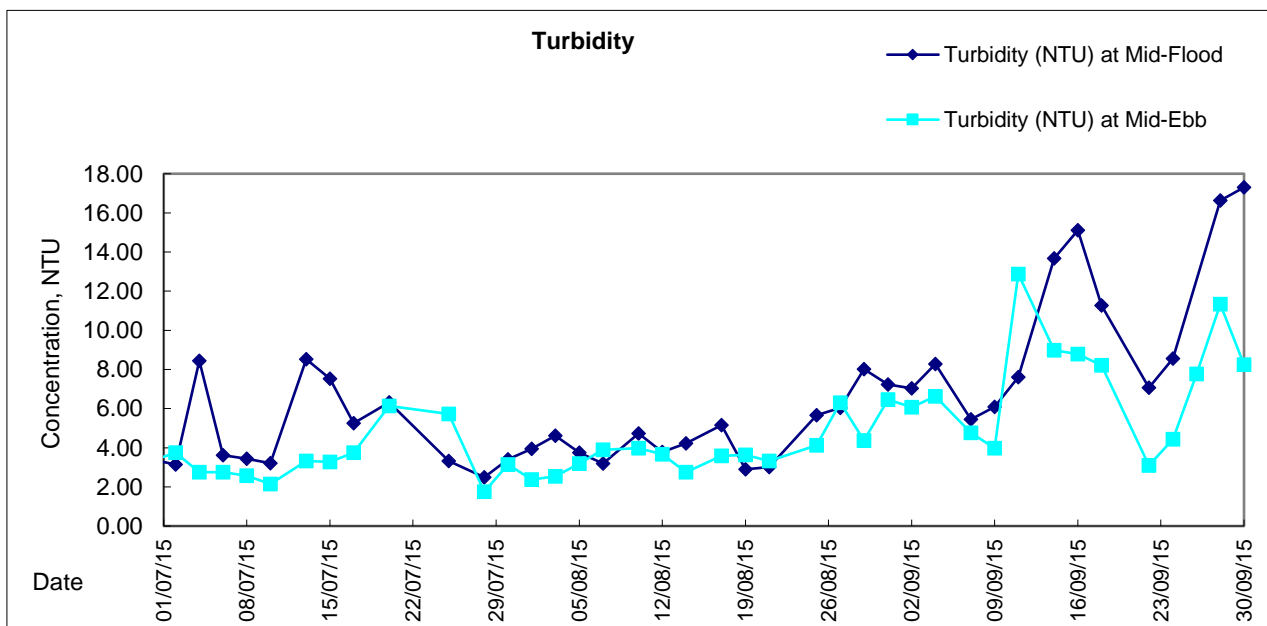
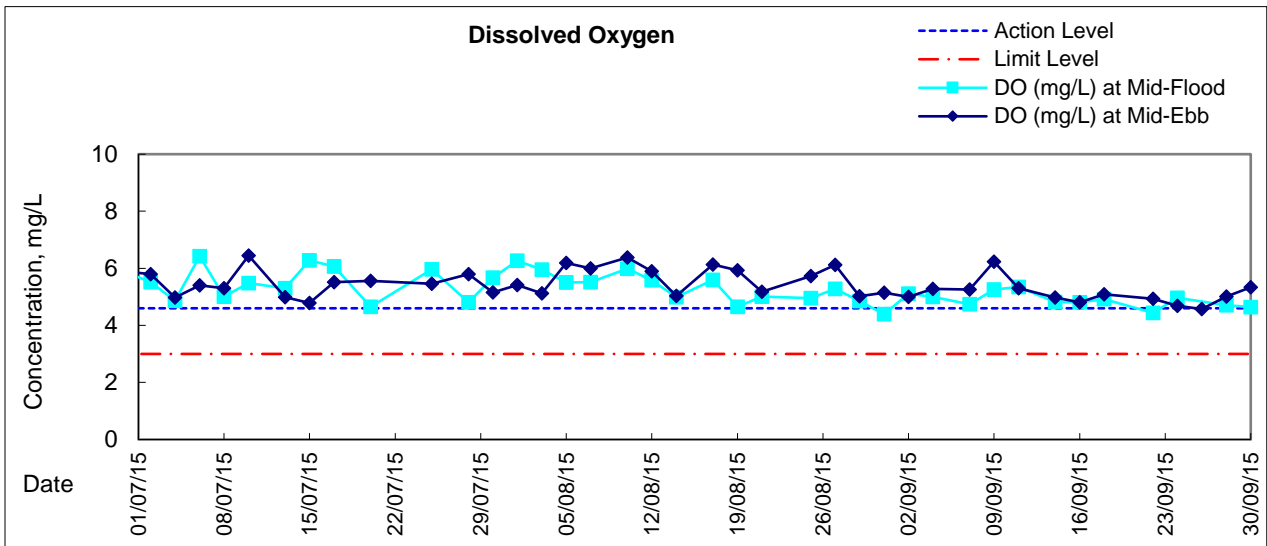


**Water Monitoring Result at Culvert J - Reference Station
Mid-Ebb Tide**

Date	Time	Weather Condition	Sampling Depth		Water Temperature			pH			Salinity		DO Saturation		DO		Turbidity		Suspended Solids					
					°C		-		ppt		%		mg/L		NTU		mg/L							
					Value	Average	Value	Average	Value	Average	Value	Average	Value	Average	Value	Average	Value	Average	Value	Average				
2/9/15	14:35	Cloudy	Middle	4	25.60	25.60	25.65	8.21	8.21	8.21	30.80	30.81	30.81	64.1	62.7	63.0	4.40	4.30	4.32	8.08	8.07	8.09	5	5.00
	14:37		Middle	4	25.70	25.70		8.21	8.21		30.81	30.81		62.9	62.4		4.31	4.28		8.09	8.10		5	
4/9/15	15:55	Fine	Middle	4	28.20	28.20	28.50	8.15	8.15	8.12	27.34	27.34	27.31	61.7	60.4	61.1	4.12	4.03	4.08	10.76	10.78	10.77	7	7.50
	15:57		Middle	4	28.80	28.80		8.09	8.09		27.28	27.28		60.6	61.6		4.05	4.11		10.76	10.76		8	
7/9/15	8:35	Fine	Middle	4	27.50	27.50	27.50	8.31	8.31	8.29	28.71	28.71	28.71	77.3	75.7	75.0	5.20	5.09	5.04	4.68	4.67	4.64	4	3.50
	8:37		Middle	4	27.50	27.50		8.26	8.26		28.70	28.70		73.7	73.2		4.96	4.92		4.62	4.58		3	
9/9/15	10:10	Fine	Middle	4	27.00	27.00	27.10	8.21	8.21	8.21	29.12	29.12	29.12	81.0	82.0	81.1	5.47	5.54	5.48	5.30	5.35	5.36	2	3.00
	10:12		Middle	4	27.20	27.20		8.20	8.20		29.12	29.12		80.8	80.5		5.46	5.44		5.39	5.41		4	
11/9/15	15:50	Fine	Middle	4	27.50	27.50	27.70	8.23	8.23	8.24	31.44	31.44	31.37	77.0	74.6	73.9	5.09	4.92	4.88	8.29	8.23	8.19	8	7.50
	15:52		Middle	4	27.90	27.90		8.25	8.25		31.29	31.29		72.4	71.7		4.77	4.73		8.14	8.08		7	
14/9/15	14:15	Fine	Middle	4	28.70	28.70	28.80	8.26	8.26	8.25	29.04	29.04	29.03	60.3	57.6	58.6	3.97	3.77	3.85	10.80	10.86	10.84	9	8.50
	14:17		Middle	4	28.90	28.90		8.23	8.23		29.02	29.02		58.4	57.9		3.84	3.80		10.89	10.81		8	
16/9/15	14:01	Fine	Middle	4	28.60	28.60	28.85	8.30	8.30	8.29	30.92	30.92	30.94	58.6	57.1	56.3	3.77	3.71	3.65	10.07	10.09	10.10	7	6.50
	14:03		Middle	4	29.10	29.10		8.28	8.28		30.95	30.95		55.3	54.2		3.59	3.52		10.12	10.13		6	
18/9/15	14:38	Fine	Middle	4	29.30	29.30	29.45	8.25	8.25	8.23	30.33	30.33	30.24	54.7	53.3	54.3	3.54	3.45	3.51	10.31	10.36	10.33	6	6.00
	14:40		Middle	4	29.60	29.60		8.21	8.21		30.15	30.15		53.1	56.2		3.43	3.63		10.33	10.31		6	
22/9/15	6:08	Cloudy	Middle	3	27.70	27.70	27.70	8.23	8.23	8.21	25.83	25.83	25.83	59.9	61.7	61.2	4.13	4.20	4.18	7.25	6.98	7.11	5	5.00
	6:09		Middle	3	27.70	27.70		8.18	8.20		25.82	25.82		61.9	61.4		4.21	4.18		7.08	7.11		5	
24/9/15	8:57	Fine	Middle	4	29.10	29.10	29.15	8.27	8.27	8.26	29.69	29.69	29.68	61.6	60.2	59.5	4.01	3.92	3.87	5.47	5.47	5.46	3	2.50
	8:59		Middle	4	29.20	29.20		8.25	8.25		29.67	29.67		58.6	57.4		3.82	3.74		5.46	5.43		2	
26/9/15	10:20	Fine	Middle	4	29.70	29.70	29.65	8.33	8.33	8.33	29.89	29.89	29.89	68.3	66.5	65.8	4.41	4.30	4.25	7.37	7.36	7.36	3	2.50
	10:22		Middle	4	29.60	29.60		8.33	8.33		29.89	29.89		64.9	63.5		4.19	4.09		7.36	7.36		2	
28/9/15	11:39	Sunny	Middle	3	29.90	29.90	29.90	8.07	8.07	8.04	23.83	23.83	23.83	21.3	21.9	21.9	1.42	1.45	1.46	12.79	12.99	13.27	10	10.50
	11:40		Middle	3	29.90	29.90		8.00	8.00		23.83	23.83		22.1	22.3		1.47	1.48		13.72	13.59		11	
30/9/15	14:34	Fine	Middle	4	29.70	29.70	29.80	8.26	8.26	8.22	26.80	26.80	26.79	44.6	45.6	45.6	2.92	2.98	2.99	9.12	9.08	9.25	7	7.00
	14:36		Middle	4	29.90	29.90		8.18	8.18		26.77	26.77		46.2	46.1		3.02	3.02		9.33	9.45		7	



Graphic Presentation of Water Quality Result of M5B - Central Cooling Water Intake Groups





Graphic Presentation of Water Quality Result of Culvert J - Reference Station

