



**Water Monitoring Result at M5B - Central Cooling Water Intake Group
Mid-Flood Tide**

Date	Time	Weather Condition	Sampling Depth		Water Temperature			pH			Salinity			DO Saturation		DO		Turbidity			Suspended Solids			
			m		°C		-		ppt		%		mg/L		NTU		mg/L							
					Value	Average	Value	Average	Value	Average	Value	Average	Value	Average	Value	Average	Value	Average	Value	Average				
1/6/15	16:54	Cloudy	Middle	3.5	27.50	27.50	27.35	8.37	8.37	8.38	26.87	26.87	26.90	70.8	70.8	70.1	4.84	4.84	4.79	3.51	3.45	3.47	4	4.00
	16:56		Middle	3.5	27.20	27.20		8.39	8.39		26.92	26.92		69.6	69.3		4.75	4.74		3.43	3.50		4	
3/6/15	20:24	Cloudy	Middle	3.0	27.50	27.50	27.55	8.18	8.18	8.18	27.69	27.69	27.69	71.8	71.1	71.0	4.86	4.81	4.81	3.84	3.70	3.67	4	4.00
	20:25		Middle	3.0	27.60	27.60		8.18	8.18		27.69	27.69		70.5	70.7		4.77	4.78		3.60	3.53		4	
5/6/15	21:24	Cloudy	Middle	3.5	26.50	26.50	26.60	8.08	8.08	8.09	28.92	28.92	28.92	71.6	71.9	71.6	4.89	4.91	4.88	2.82	3.01	2.85	2	2.00
	21:25		Middle	3.5	26.70	26.70		8.09	8.09		28.92	28.92		71.6	71.1		4.88	4.85		2.88	2.68		2	
8/6/15	9:20	Fine	Middle	3.5	26.70	26.70	26.80	8.13	8.13	8.15	29.03	29.03	29.03	70.3	71.4	71.4	4.78	4.85	4.85	2.71	2.66	2.67	2	2.00
	9:22		Middle	3.5	26.90	26.90		8.16	8.16		29.03	29.03		71.8	72.1		4.87	4.89		2.65	2.64		2	
10/6/15	11:50	Fine	Middle	3.0	28.20	28.20	28.30	8.30	8.30	8.31	27.22	27.22	27.22	74.3	74.5	73.7	4.97	4.99	4.94	3.75	3.72	3.73	4	4.00
	11:52		Middle	3.0	28.40	28.40		8.31	8.31		27.21	27.21		73.4	72.7		4.91	4.87		3.72	3.73		4	
12/6/15	14:47	Fine	Middle	3.5	27.60	27.60	27.70	8.25	8.25	8.27	28.10	28.10	28.07	65.0	63.2	62.7	4.37	4.25	<u>4.21</u>	3.34	3.33	3.36	4	3.00
	14:49		Middle	3.5	27.80	27.80		8.28	8.28		28.04	28.04		62.2	60.4		4.16	4.06		3.35	3.42		2	
15/6/15	18:25	Fine	Middle	3.0	26.90	26.90	27.05	8.13	8.13	8.12	30.53	30.53	30.53	73.8	73.1	73.8	4.79	4.76	4.80	4.34	4.31	4.28	5	5.00
	18:27		Middle	3.0	27.20	27.20		8.11	8.11		30.53	30.53		74.1	74.3		4.82	4.83		4.23	4.22		5	
17/6/15	21:44	Cloudy	Middle	3.5	27.30	27.30	27.35	8.16	8.16	8.17	30.13	30.13	30.13	77.0	77.7	77.3	5.14	5.19	5.16	5.23	5.14	5.14	7	6.50
	21:45		Middle	3.5	27.40	27.40		8.17	8.17		30.13	30.13		77.9	76.4		5.19	5.10		5.10	5.08		6	
19/6/15	22:56	Fine	Middle	3.0	27.10	27.10	27.03	8.04	8.04	8.07	28.97	28.97	28.97	76.7	78.5	77.5	5.20	5.32	5.25	2.59	2.45	2.42	5	5.00
	22:57		Middle	3.0	26.90	27.00		8.09	8.09		28.96	28.96		77.4	77.2		5.25	5.24		2.33	2.31		5	
22/6/15	10:00	Cloudy	Middle	3.5	27.10	27.10	27.15	8.33	8.33	8.34	26.54	26.54	26.55	44.3	43.8	43.6	3.03	3.00	<u>2.98</u>	2.23	2.25	2.24	4	3.50
	10:02		Middle	3.5	27.20	27.20		8.34	8.34		26.56	26.56		43.2	43.0		2.96	2.94		2.26	2.21		3	
25/6/15	0:51	Cloudy	Middle	3.0	27.70	27.70	27.70	8.33	8.33	8.34	25.11	25.11	25.11	81.3	81.9	81.1	5.56	5.60	5.54	2.54	2.57	2.53	3	3.00
	0:52		Middle	3.0	27.70	27.70		8.34	8.34		25.11	25.11		81.1	80.0		5.55	5.46		2.51	2.48		3	
27/6/15	0:08	Cloudy	Middle	3.0	28.20	28.20	28.25	8.34	8.34	8.35	23.64	23.64	23.64	82.3	84.1	82.0	5.62	5.75	5.61	2.46	2.52	2.42	8	8.50
	0:09		Middle	3.0	28.30	28.30		8.35	8.35		23.64	23.64		81.3	80.3		5.56	5.49		2.40	2.31		9	
29/6/15	16:25	Fine	Middle	3.5	29.60	29.60	29.75	8.40	8.40	8.40	24.41	24.41	24.41	91.3	91.8	90.9	6.06	6.09	6.03	3.53	3.52	3.52	6	6.00
	16:27		Middle	3.5	29.90	29.90		8.40	8.40		24.40	24.40		89.8	90.5		5.96	6.00		3.52	3.51		6	

Remarks:
Single underline denotes exceedance over Action Level.
Double underline denotes exceedance over Limit Level.



**Water Monitoring Result at Culvert J - Reference Station
Mid-Flood Tide**

Date	Time	Weather Condition	Sampling Depth m	Water Temperature °C		pH		Salinity ppt		DO Saturation %		DO mg/L		Turbidity NTU		Suspended Solids mg/L								
				Value	Average	Value	Average	Value	Average	Value	Average	Value	Average	Value	Average	Value	Average							
1/6/15	16:51	Cloudy	Middle	3.5	27.40	27.40	27.45	8.31	8.31	8.33	27.04	27.04	27.02	57.7	61.5	59.4	3.92	4.18	4.04	4.42	4.39	4.37	5	4.00
	16:53		Middle	3.5	27.50	27.50		8.34	8.34		27.00	27.00		60.4	58.1		4.11	3.95		4.34	4.34		3	
3/6/15	20:32	Cloudy	Middle	2.5	27.10	27.10	27.10	8.18	8.18	8.17	25.84	25.84	25.84	61.6	61.4	61.5	4.24	4.23	4.23	5.05	5.02	4.95	5	5.00
	20:33		Middle	2.5	27.10	27.10		8.16	8.16		25.84	25.84		61.2	61.7		4.21	4.24		4.90	4.83		5	
5/6/15	21:30	Cloudy	Middle	3.0	26.70	26.70	26.75	8.10	8.10	8.09	27.23	27.23	27.23	61.4	61.8	61.4	4.23	4.26	4.23	6.50	6.44	6.38	7	6.50
	21:31		Middle	3.0	26.80	26.80		8.08	8.08		27.23	27.23		61.3	61.0		4.22	4.20		6.11	6.48		6	
8/6/15	9:15	Fine	Middle	3.0	27.20	27.20	27.30	8.10	8.10	8.10	26.75	26.75	26.75	56.3	57.5	57.6	3.84	3.93	3.93	4.68	4.68	4.68	4	3.50
	9:17		Middle	3.0	27.40	27.40		8.10	8.10		26.75	26.75		58.1	58.3		3.96	3.98		4.68	4.67		3	
10/6/15	11:45	Fine	Middle	2.5	28.70	28.70	28.80	8.23	8.23	8.25	26.61	26.61	26.61	71.8	72.4	71.2	4.78	4.81	4.73	4.32	4.29	4.21	5	6.00
	11:47		Middle	2.5	28.90	28.90		8.27	8.27		26.61	26.61		70.3	70.1		4.68	4.66		4.17	4.06		7	
12/6/15	14:44	Fine	Middle	3.5	28.70	28.70	28.80	8.23	8.23	8.23	27.32	27.32	27.33	51.1	51.1	49.9	3.39	3.38	3.31	3.77	3.76	3.75	3	3.50
	14:46		Middle	3.5	28.90	28.90		8.23	8.23		27.34	27.34		49.0	48.4		3.26	3.21		3.74	3.73		4	
15/6/15	18:30	Fine	Middle	2.5	27.20	27.20	27.45	8.20	8.20	8.22	28.26	28.26	28.26	69.7	70.2	69.8	4.69	4.72	4.69	3.22	3.23	3.23	6	5.50
	18:32		Middle	2.5	27.70	27.70		8.23	8.23		28.26	28.26		69.0	70.1		4.64	4.72		3.24	3.24		5	
17/6/15	21:34	Cloudy	Middle	3.0	28.20	28.20	28.25	8.18	8.18	8.18	27.21	27.21	27.21	83.7	84.9	83.5	5.60	5.68	5.59	7.28	7.31	7.29	6	6.50
	21:35		Middle	3.0	28.30	28.30		8.17	8.17		27.20	27.20		82.4	83.1		5.51	5.56		7.25	7.33		7	
19/6/15	23:03	Fine	Middle	2.5	27.00	27.00	26.98	8.11	8.11	8.09	24.67	24.67	24.67	44.0	44.2	43.9	3.06	3.08	3.05	6.01	5.96	6.13	8	7.00
	23:04		Middle	2.5	26.90	27.00		8.07	8.07		24.67	24.67		43.4	43.8		3.02	3.05		6.18	6.36		6	
22/6/15	10:05	Cloudy	Middle	3.0	27.30	27.30	27.35	8.37	8.37	8.36	21.03	21.03	21.03	43.3	43.2	43.1	3.05	3.04	3.04	8.51	8.49	8.48	7	7.00
	10:07		Middle	3.0	27.40	27.40		8.34	8.34		21.03	21.03		43.0	43.0		3.03	3.03		8.46	8.44		7	
25/6/15	0:57	Cloudy	Middle	2.5	27.80	27.80	27.80	8.27	8.27	8.27	21.99	21.99	22.00	71.6	72.3	71.5	4.97	5.02	4.97	3.97	3.52	3.60	3	4.00
	0:58		Middle	2.5	27.80	27.80		8.26	8.26		22.00	22.00		71.2	71.0		4.94	4.93		3.48	3.44		5	
27/6/15	0:14	Cloudy	Middle	2.5	28.20	28.20	28.25	8.38	8.38	8.39	23.42	23.42	23.42	82.6	85.7	84.1	5.65	5.85	5.75	3.48	3.57	3.61	7	7.00
	0:15		Middle	2.5	28.30	28.30		8.39	8.39		23.42	23.42		84.4	83.8		5.77	5.73		3.72	3.65		7	
29/6/15	16:20	Fine	Middle	3.5	29.40	29.40	29.60	8.39	8.39	8.33	19.51	19.51	19.50	74.0	74.3	74.2	5.06	5.07	5.07	10.73	10.34	10.39	11	12.00
	16:22		Middle	3.5	29.80	29.80		8.26	8.26		19.49	19.49		74.2	74.3		5.06	5.07		10.36	10.12		13	



**Water Monitoring Result at M5B - Central Colling Water Intake Group
Mid-Ebb Tide**

Date	Time	Weather Condition	Sampling Depth		Water Temperature			pH			Salinity		DO Saturation		DO		Turbidity		Suspended Solids					
					°C		-		ppt		%		mg/L		NTU		mg/L							
					Value	Average	Value	Average	Value	Average	Value	Average	Value	Average	Value	Average	Value	Average	Value	Average				
1/6/15	10:41	Cloudy	Middle	3.5	27.40	27.40	27.40	8.27	8.27	8.30	27.48	27.48	27.48	58.4	58.3	59.5	3.96	3.96	<u>4.04</u>	4.92	4.92	4.92	5	5.50
	10:43		Middle	3.5	27.40	27.40		8.32	8.32		27.47	27.47		60.6	60.8		4.11	4.13		4.92	4.91		6	
3/6/15	10:40	Fine	Middle	3.5	27.20	27.20	27.25	8.12	8.12	8.16	28.03	28.03	28.03	68.5	68.5	68.1	4.64	4.64	4.61	2.75	2.73	2.73	2	2.00
	10:42		Middle	3.5	27.30	27.30		8.19	8.19		28.02	28.02		67.9	67.5		4.60	4.57		2.72	2.71		2	
5/6/15	11:30	Cloudy	Middle	3.5	26.90	26.90	27.05	8.17	8.17	8.17	30.27	30.27	30.27	71.0	70.6	70.7	4.76	4.74	4.74	2.49	4.46	2.97	4	3.50
	11:32		Middle	3.5	27.20	27.20		8.17	8.17		30.27	30.27		70.4	70.6		4.73	4.74		2.46	2.46		3	
8/6/15	16:35	Fine	Middle	3.5	27.80	27.80	27.85	8.19	8.19	8.20	28.88	28.88	28.87	65.8	66.2	65.4	4.40	4.42	<u>4.36</u>	3.53	3.49	3.50	3	3.50
	16:37		Middle	3.5	27.90	27.90		8.21	8.21		28.85	28.85		65.4	64.0		4.37	4.26		3.49	3.50		4	
10/6/15	16:43	Fine	Middle	3.5	27.60	27.60	27.65	8.31	8.31	8.34	26.98	26.98	26.98	66.2	66.0	65.1	4.48	4.47	<u>4.41</u>	2.93	2.99	2.92	7	7.00
	16:45		Middle	3.5	27.70	27.70		8.37	8.37		26.98	26.98		65.1	63.0		4.41	4.27		2.87	2.87		7	
12/6/15	8:40	Fine	Middle	3.0	27.40	27.40	27.50	8.26	8.26	8.28	25.46	25.46	25.45	69.3	71.3	70.8	4.75	4.88	4.85	3.70	3.72	3.74	2	2.00
	8:42		Middle	3.0	27.60	27.60		8.30	8.30		25.44	25.44		71.3	71.4		4.89	4.89		3.76	3.77		2	
15/6/15	10:45	Fine	Middle	3.0	27.30	27.30	27.35	8.25	8.25	8.26	28.23	28.23	28.22	74.2	74.4	74.3	5.01	5.03	5.02	2.51	2.64	2.76	2	3.00
	10:47		Middle	3.0	27.40	27.40		8.26	8.26		28.21	28.21		73.9	74.6		5.00	5.04		2.92	2.98		4	
17/6/15	11:33	Fine	Middle	3.5	27.50	27.50	27.65	8.23	8.23	8.24	29.73	29.73	29.73	70.8	71.9	70.7	4.72	4.79	4.71	2.70	2.70	2.71	4	4.00
	11:35		Middle	3.5	27.80	27.80		8.25	8.25		29.72	29.73		70.4	69.6		4.69	4.63		2.70	2.72		4	
19/6/15	16:09	Fine	Middle	3.5	28.90	28.90	29.00	8.18	8.18	8.21	28.50	28.50	28.48	60.9	60.4	60.3	4.01	3.97	<u>3.96</u>	2.87	2.65	2.70	4	3.50
	16:11		Middle	3.5	29.10	29.10		8.23	8.23		28.46	28.46		59.8	60.0		3.93	3.94		2.64	2.65		3	
22/6/15	15:44	Fine	Middle	3.5	28.50	28.50	28.55	8.42	8.42	8.44	25.32	25.32	25.31	65.7	65.3	64.5	4.43	4.40	<u>4.35</u>	2.27	2.27	2.32	5	4.50
	15:46		Middle	3.5	28.60	28.60		8.46	8.46		25.30	25.30		64.4	62.7		4.32	4.23		2.36	2.36		4	
24/6/15	15:35	Cloudy	Middle	3.0	28.00	28.00	28.10	8.44	8.44	8.45	25.14	25.14	25.14	83.9	85.6	82.9	5.70	5.82	5.63	1.75	1.72	1.71	<2	2.00
	15:37		Middle	3.0	28.20	28.20		8.46	8.46		25.14	25.14		81.4	80.5		5.53	5.47		1.70	1.67		2	
26/6/15	21:30	Cloudy	Middle	3.0	28.30	28.30	28.35	8.37	8.37	8.37	24.01	24.01	24.01	82.5	84.0	84.2	5.61	5.72	5.73	3.31	3.47	3.50	8	8.00
	21:31		Middle	3.0	28.40	28.40		8.37	8.37		24.01	24.01		85.4	85.0		5.81	5.79		3.65	3.57		8	
29/6/15	11:20	Fine	Middle	3.0	29.40	29.40	29.45	8.43	8.43	8.45	23.11	23.11	23.11	88.8	88.2	88.4	5.96	5.92	5.93	3.15	3.04	3.12	8	8.00
	11:22		Middle	3.0	29.50	29.50		8.46	8.46		23.11	23.11		89.1	87.4		5.98	5.87		3.09	3.20		8	

Remarks:
Single underline denotes exceedance over Action Level.
Double underline denotes exceedance over Limit Level.

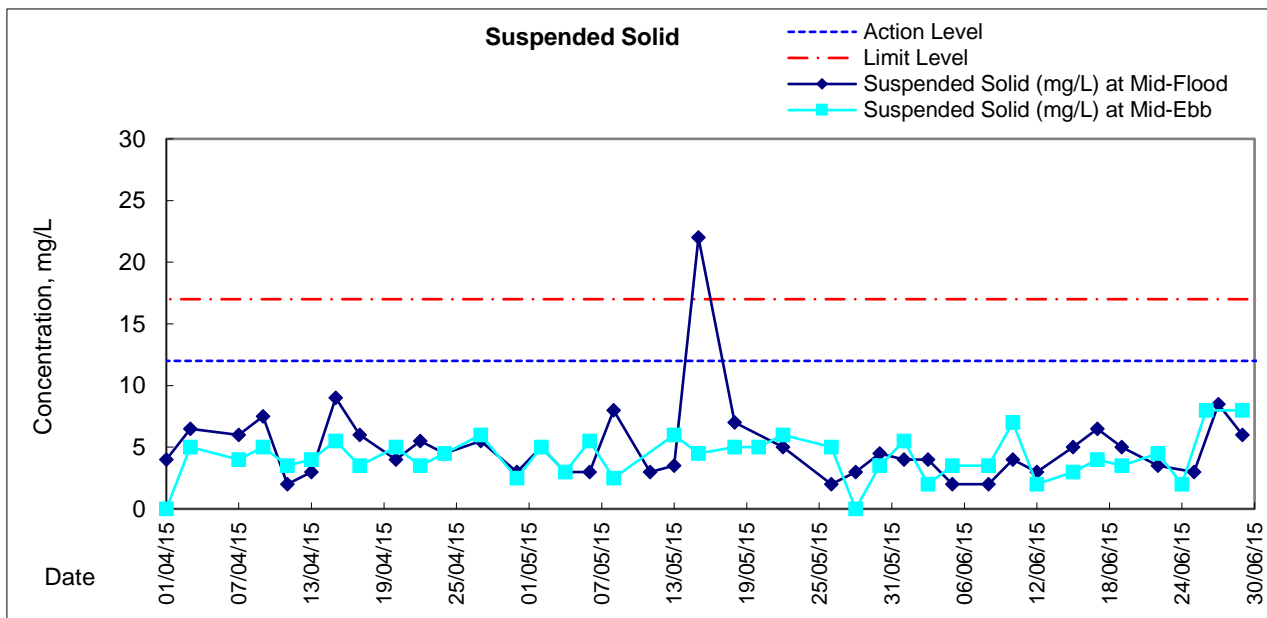
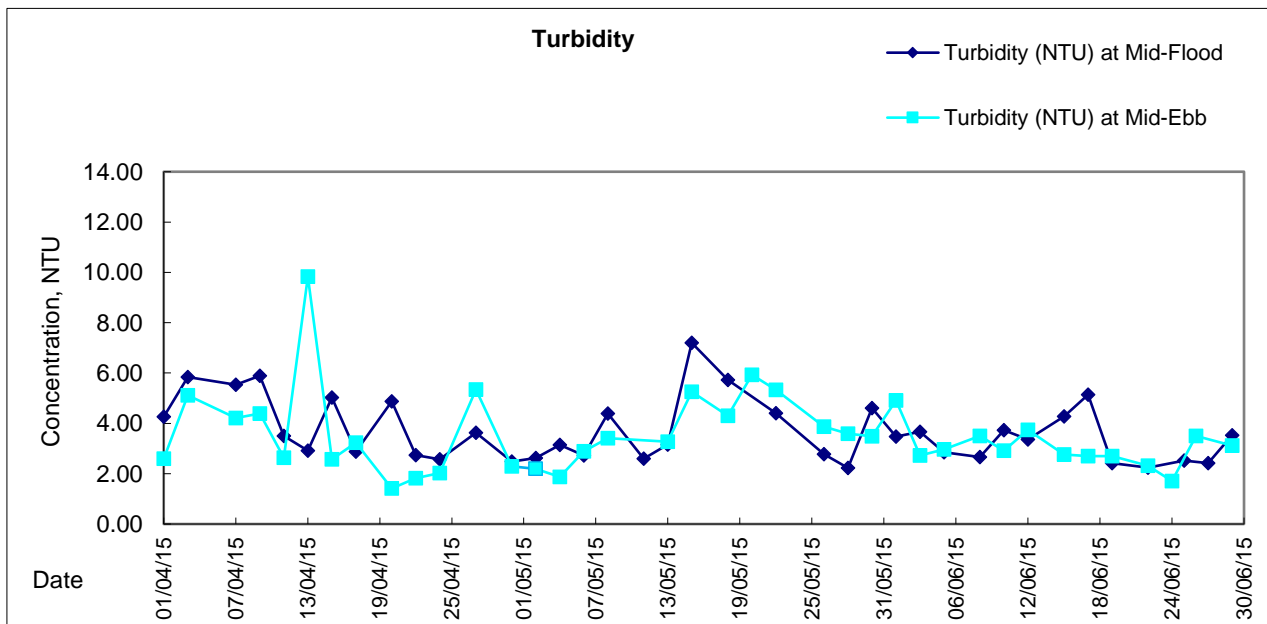
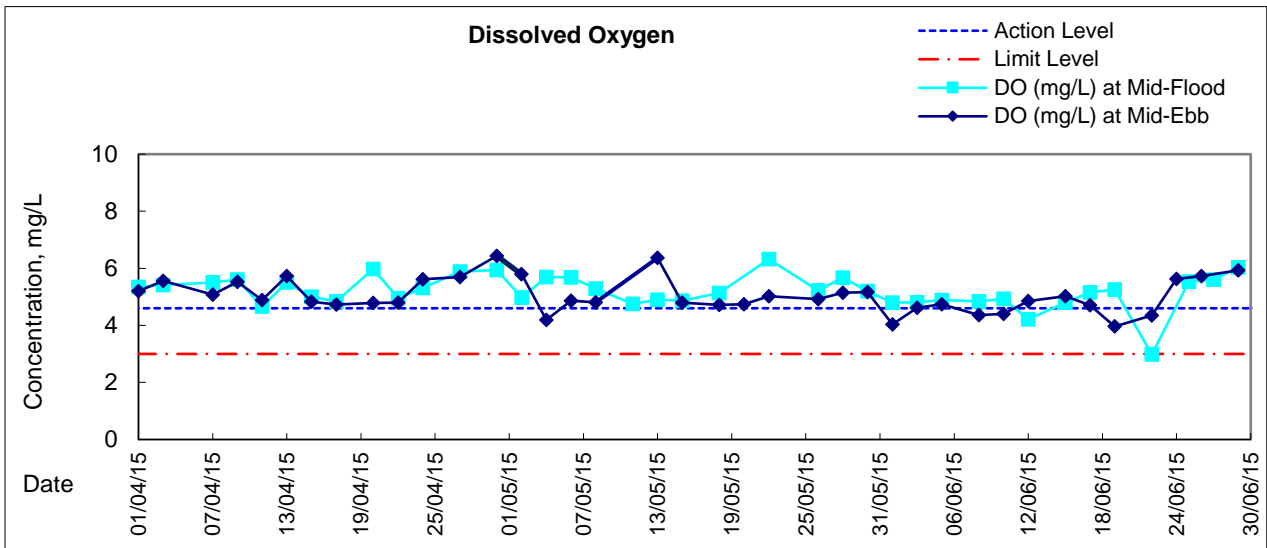


**Water Monitoring Result at Culvert J - Reference Station
Mid-Ebb Tide**

Date	Time	Weather Condition	Sampling Depth		Water Temperature		pH			Salinity		DO Saturation		DO		Turbidity		Suspended Solids						
					°C		-			ppt		%		mg/L		NTU		mg/L						
					Value	Average	Value	Average	Value	Average	Value	Average	Value	Average	Value	Average	Value	Average	Value	Average				
1/6/15	10:37	Cloudy	Middle	4	27.60	27.60	27.55	8.24	8.24	8.25	25.29	25.29	25.29	53.0	52.3	52.0	3.63	3.57	3.56	8.07	8.07	8.15	4	4.00
	10:39		Middle	4	27.50	27.50		8.26	8.26		25.29	25.29		51.7	51.0		3.53	3.49		8.22	8.24		4	
3/6/15	10:35	Fine	Middle	4	28.10	28.10	28.15	8.01	8.01	8.01	22.43	22.43	22.43	50.4	51.2	51.3	3.48	3.53	3.54	9.04	9.04	9.02	5	5.00
	10:37		Middle	4	28.20	28.20		8.01	8.01		22.42	22.42		51.7	51.8		3.56	3.57		9.00	9.00		5	
5/6/15	11:25	Cloudy	Middle	4	27.40	27.40	27.55	8.15	8.15	8.15	30.22	30.22	30.21	56.1	57.4	56.8	3.71	3.82	3.77	3.49	3.51	3.51	6	5.50
	11:27		Middle	4	27.70	27.70		8.15	8.15		30.20	30.20		56.9	56.9		3.78	3.78		3.51	3.51		5	
8/6/15	16:30	Fine	Middle	4	28.10	28.10	28.20	8.19	8.19	8.19	28.07	28.07	28.04	67.7	67.0	66.7	4.51	4.47	4.46	4.82	4.77	4.79	5	4.50
	16:32		Middle	4	28.30	28.30		8.18	8.18		28.00	28.00		68.0	64.0		4.60	4.27		4.77	4.80		4	
10/6/15	16:40	Fine	Middle	4	27.80	27.80	27.85	8.30	8.30	8.31	22.33	22.33	22.23	60.7	60.2	60.0	4.21	4.17	4.16	8.81	8.81	8.79	6	6.50
	16:42		Middle	4	27.90	27.90		8.31	8.31		22.13	22.13		59.6	59.4		4.13	4.12		8.77	8.77		7	
12/6/15	8:35	Fine	Middle	3	27.80	27.80	27.80	8.24	8.24	8.24	22.51	22.51	22.51	69.2	69.7	69.8	4.80	4.83	4.84	8.29	8.31	8.26	6	5.50
	8:37		Middle	3	27.80	27.80		8.24	8.24		22.51	22.51		70.0	70.2		4.85	4.86		8.28	8.16		5	
15/6/15	10:40	Fine	Middle	3	27.70	27.70	27.80	8.21	8.21	8.22	26.81	26.81	26.81	69.7	71.7	70.4	4.72	4.85	4.76	4.19	4.29	4.32	4	4.50
	10:42		Middle	3	27.90	27.90		8.22	8.22		26.81	26.81		70.0	70.0		4.73	4.73		4.33	4.48		5	
17/6/15	11:37	Fine	Middle	4	27.50	27.50	27.60	8.23	8.23	8.18	26.30	26.30	26.30	54.7	54.8	54.8	3.72	3.73	3.72	6.61	6.61	6.57	6	6.50
	11:39		Middle	4	27.70	27.70		8.13	8.13		26.29	26.29		54.9	54.9		3.74	3.70		6.54	6.50		7	
19/6/15	16:05	Fine	Middle	4	29.60	29.60	29.85	8.16	8.16	8.15	26.77	26.77	26.72	50.2	49.3	49.6	3.29	3.23	3.25	7.97	8.07	7.97	4	4.00
	16:07		Middle	4	30.10	30.10		8.14	8.14		26.67	26.67		49.5	49.4		3.24	3.23		8.31	7.51		4	
22/6/15	15:48	Fine	Middle	4	28.40	28.40	28.35	8.49	8.49	8.47	22.30	22.30	22.29	67.3	65.6	65.4	4.63	4.51	4.50	5.63	5.37	5.38	8	8.00
	15:50		Middle	4	28.30	28.30		8.45	8.45		22.28	22.28		64.7	63.8		4.45	4.39		5.22	5.28		8	
24/6/15	15:30	Cloudy	Middle	3	28.40	28.40	28.45	8.36	8.36	8.39	25.11	25.11	25.11	85.4	83.7	82.9	5.77	5.65	5.60	1.88	1.89	1.88	3	3.50
	15:32		Middle	3	28.50	28.50		8.42	8.42		25.10	25.10		81.6	80.8		5.51	5.46		1.88	1.87		4	
26/6/15	21:38	Cloudy	Middle	3	28.20	28.20	28.20	8.29	8.29	8.26	20.44	20.44	20.45	70.9	70.5	70.1	4.93	4.90	4.87	3.16	3.14	3.11	10	9.00
	21:39		Middle	3	28.20	28.20		8.23	8.23		20.46	20.46		69.7	69.1		4.85	4.81		3.07	3.05		8	
29/6/15	11:15	Fine	Middle	3	29.70	29.70	29.80	8.31	8.31	8.31	22.48	22.48	22.48	78.6	80.8	80.2	5.26	5.42	5.38	4.83	4.83	4.84	9	8.50
	11:17		Middle	3	29.90	29.90		8.31	8.31		22.48	22.48		81.0	80.4		5.45	5.38		4.83	4.87		8	



Graphic Presentation of Water Quality Result of M5B - Central Cooling Water Intake Groups





Graphic Presentation of Water Quality Result of Culvert J - Reference Station

