



Location: CMA1b - Oil Street Site Office

Report on 24-hour TSP monitoring

Action Level ( $\mu\text{g}/\text{m}^3$ ) - 176.7

Limit Level ( $\mu\text{g}/\text{m}^3$ ) - 260

Date	Sampling Time	Weather Condition	Filter paper no.	Filter Weight, g		Elapse Time, hr		Sampling Time, hr	Flow Rate, $\text{m}^3/\text{min}$			Total Volume, $\text{m}^3$	TSP Level, $\mu\text{g}/\text{m}^3$
				Initial	Final	Initial	Final		Initial, $Q_{si}$	Final, $Q_{sf}$	Average		
29-Dec-15	8:00	Cloudy	014098	2.8945	3.1375	7465.10	7489.10	24.00	1.28	1.29	1.28	1850	131.3
4-Jan-16	8:00	Cloudy	014132	2.8075	2.9708	7492.10	7516.10	24.00	1.28	1.27	1.27	1836	89.0
9-Jan-16	8:00	Cloudy	014373	2.8137	3.0121	7519.10	7543.10	24.00	1.28	1.28	1.28	1844	107.6
15-Jan-16	8:00	Rainy	014483	2.7887	2.9066	7546.10	7570.10	24.00	1.28	1.28	1.28	1847	63.8
21-Jan-16	8:00	Cloudy	014463	2.7733	2.9025	7573.60	7597.60	24.00	1.28	1.29	1.29	1851	69.8

Report on 1-hour TSP monitoring

Action Level ( $\mu\text{g}/\text{m}^3$ ) - 320.1

Limit Level ( $\mu\text{g}/\text{m}^3$ ) - 500

Date	Sampling Time	Weather Condition	Filter paper no.	Filter Weight, g		Elapse Time, hr		Sampling Time, hr	Flow Rate, $\text{m}^3/\text{min}$			Total Volume, $\text{m}^3$	TSP Level, $\mu\text{g}/\text{m}^3$
				Initial	Final	Initial	Final		Initial, $Q_{si}$	Final, $Q_{sf}$	Average		
30-Dec-15	9:10	Cloudy	014359	2.7908	2.8019	7489.10	7490.10	1.00	1.29	1.29	1.29	77	143.9
30-Dec-15	13:00	Cloudy	014361	2.8076	2.8195	7490.10	7491.10	1.00	1.29	1.29	1.29	77	154.3
30-Dec-15	15:00	Cloudy	014302	2.8965	2.9095	7491.10	7492.10	1.00	1.29	1.29	1.29	77	168.6
5-Jan-16	9:45	Rainy	014369	2.8261	2.8386	7516.10	7517.10	1.00	1.83	1.83	1.83	110	113.6
5-Jan-16	10:48	Rainy	014337	2.8311	2.8442	7517.10	7518.10	1.00	1.83	1.83	1.83	110	119.0
5-Jan-16	13:00	Rainy	014371	2.8232	2.8344	7518.10	7519.10	1.00	1.83	1.83	1.83	110	101.8
11-Jan-16	9:56	Rainy	014381	2.8030	2.8080	7543.10	7544.10	1.00	1.28	1.28	1.28	77	65.2
11-Jan-16	10:59	Rainy	014491	2.8139	2.8167	7544.10	7545.10	1.00	1.28	1.28	1.28	77	36.5
11-Jan-16	13:00	Rainy	014488	2.8169	2.8219	7545.10	7546.10	1.00	1.28	1.28	1.28	77	65.2
16-Jan-16	9:25	Cloudy	014472	2.7841	2.7957	7570.10	7571.10	1.00	1.28	1.28	1.28	77	150.9
16-Jan-16	10:44	Cloudy	014469	2.8099	2.8196	7571.10	7572.10	1.00	1.28	1.28	1.28	77	126.2
16-Jan-16	13:00	Cloudy	014466	2.8198	2.8373	7572.10	7573.10	1.00	1.28	1.28	1.28	77	227.6
22-Jan-16	8:55	Rainy	014404	2.7952	2.8061	7597.60	7598.60	1.00	1.29	1.29	1.29	77	141.1
22-Jan-16	10:35	Rainy	014407	2.7952	2.8048	7598.60	7599.60	1.00	1.29	1.29	1.29	77	124.3
22-Jan-16	13:00	Rainy	014410	2.7914	2.8074	7599.60	7600.60	1.00	1.29	1.29	1.29	77	207.1



Location: CMA2a - Causeway Bay Community Centre

Report on 24-hour TSP monitoring

Action Level ( $\mu\text{g}/\text{m}^3$ ) - 169.5

Limit Level ( $\mu\text{g}/\text{m}^3$ ) - 260

Date	Sampling Time	Weather Condition	Filter paper no.	Filter Weight, g		Elapse Time, hr		Sampling Time, hr	Flow Rate, $\text{m}^3/\text{min}$			Total Volume, $\text{m}^3$	TSP Level, $\mu\text{g}/\text{m}^3$
				Initial	Final	Initial	Final		Initial, $Q_{si}$	Final, $Q_{sf}$	Average		
29-Dec-15	8:00	Cloudy	014261	2.8820	3.0305	17115.01	17139.01	24.00	1.23	1.24	1.24	1779	83.5
4-Jan-16	8:00	Cloudy	014365	2.8229	2.9015	17142.01	17166.01	24.00	1.11	1.11	1.11	1601	49.1
9-Jan-16	8:00	Cloudy	014372	2.8174	2.9294	17169.02	17193.02	24.00	1.17	1.17	1.17	1691	66.2
15-Jan-16	8:00	Rainy	014338	2.8186	2.9042	17196.02	17220.02	24.00	1.23	1.23	1.23	1775	48.2
21-Jan-16	8:00	Cloudy	014465	2.8336	2.9304	17223.02	17247.02	24.00	1.23	1.24	1.24	1780	54.4

Report on 1-hour TSP monitoring

Action Level ( $\mu\text{g}/\text{m}^3$ ) - 323.4

Limit Level ( $\mu\text{g}/\text{m}^3$ ) - 500

Date	Sampling Time	Weather Condition	Filter paper no.	Filter Weight, g		Elapse Time, hr		Sampling Time, hr	Flow Rate, $\text{m}^3/\text{min}$			Total Volume, $\text{m}^3$	TSP Level, $\mu\text{g}/\text{m}^3$
				Initial	Final	Initial	Final		Initial, $Q_{si}$	Final, $Q_{sf}$	Average		
30-Dec-15	9:09	Cloudy	014094	2.8857	2.8946	17139.01	17140.01	1.00	1.24	1.24	1.24	74	120.0
30-Dec-15	13:15	Cloudy	014344	2.8178	2.8260	17140.01	17141.01	1.00	1.24	1.24	1.24	74	110.6
30-Dec-15	15:15	Cloudy	014297	2.9060	2.9153	17141.01	17142.01	1.00	1.24	1.24	1.24	74	125.4
5-Jan-16	9:44	Rainy	014127	2.8069	2.8140	17166.01	17167.01	1.00	1.11	1.11	1.11	67	106.5
5-Jan-16	10:49	Rainy	014122	2.7876	2.7934	17167.01	17168.01	1.00	1.11	1.11	1.11	67	87.0
5-Jan-16	13:00	Rainy	014385	2.8197	2.8268	17168.01	17169.01	1.00	1.11	1.11	1.11	67	106.5
11-Jan-16	10:06	Rainy	014498	2.7917	2.7964	17193.02	17194.02	1.00	1.23	1.23	1.23	74	63.7
11-Jan-16	13:00	Rainy	014490	2.8020	2.8048	17194.02	17195.02	1.00	1.23	1.23	1.23	74	38.0
11-Jan-16	14:05	Rainy	014489	2.7948	2.7968	17195.02	17196.02	1.00	1.23	1.23	1.23	74	27.1
16-Jan-16	9:04	Cloudy	014505	2.7965	2.8040	17220.02	17221.02	1.00	1.23	1.23	1.23	74	101.5
16-Jan-16	10:39	Cloudy	014509	2.8165	2.8239	17221.02	17222.02	1.00	1.23	1.23	1.23	74	100.2
16-Jan-16	13:00	Cloudy	014513	2.7867	2.7979	17222.02	17223.02	1.00	1.23	1.23	1.23	74	151.6
22-Jan-16	9:04	Rainy	014388	2.8154	2.8186	17247.02	17248.02	1.00	1.24	1.24	1.24	74	43.1
22-Jan-16	10:31	Rainy	014392	2.8363	2.8378	17248.02	17249.02	1.00	1.24	1.24	1.24	74	20.2
22-Jan-16	13:00	Rainy	014396	2.8318	2.8397	17249.02	17250.02	1.00	1.24	1.24	1.24	74	106.4



Location: CMA3a - CWB PRE Site Office Area

Report on 24-hour TSP monitoring

Action Level ( $\mu\text{g}/\text{m}^3$ ) - 171

Limit Level ( $\mu\text{g}/\text{m}^3$ ) - 260

Date	Sampling Time	Weather Condition	Filter paper no.	Filter Weight, g		Elapse Time, hr		Sampling Time, hr	Flow Rate, $\text{m}^3/\text{min}$			Total Volume, $\text{m}^3$	TSP Level, $\mu\text{g}/\text{m}^3$
				Initial	Final	Initial	Final		Initial, $Q_{si}$	Final, $Q_{sf}$	Average		
29-Dec-15	8:00	Cloudy	014275	2.8627	3.0136	4607.15	4631.15	24.00	1.25	1.25	1.25	1800	83.9
4-Jan-16	8:00	Cloudy	014301	2.8710	2.9349	4634.15	4658.15	24.00	1.22	1.21	1.22	1750	36.5
9-Jan-16	8:00	Cloudy	014375	2.8154	2.9456	4661.15	4685.15	24.00	1.22	1.22	1.22	1757	74.1
15-Jan-16	8:00	Rainy	014482	2.7936	2.9525	4688.15	4712.15	24.00	1.32	1.32	1.32	1906	83.4
21-Jan-16	8:00	Cloudy	014477	2.7941	2.8649	4715.15	4739.15	24.00	1.32	1.33	1.33	1910	37.1

Report on 1-hour TSP monitoring

Action Level ( $\mu\text{g}/\text{m}^3$ ) - 311.3

Limit Level ( $\mu\text{g}/\text{m}^3$ ) - 500

Date	Sampling Time	Weather Condition	Filter paper no.	Filter Weight, g		Elapse Time, hr		Sampling Time, hr	Flow Rate, $\text{m}^3/\text{min}$			Total Volume, $\text{m}^3$	TSP Level, $\mu\text{g}/\text{m}^3$
				Initial	Final	Initial	Final		Initial, $Q_{si}$	Final, $Q_{sf}$	Average		
30-Dec-15	8:50	Cloudy	014358	2.8175	2.8274	4631.15	4632.15	1.00	1.25	1.25	1.25	75	132.3
30-Dec-15	10:45	Cloudy	014360	2.8186	2.8251	4632.15	4633.15	1.00	1.25	1.25	1.25	75	86.9
30-Dec-15	14:35	Cloudy	014364	2.7787	2.7866	4633.15	4634.15	1.00	1.25	1.25	1.25	75	105.6
5-Jan-16	9:25	Rainy	014368	2.8314	2.8356	4658.15	4659.15	1.00	1.12	1.12	1.12	67	62.6
5-Jan-16	10:30	Rainy	014340	2.8343	2.8417	4659.15	4660.15	1.00	1.23	1.23	1.23	74	100.0
5-Jan-16	13:00	Rainy	014348	2.8044	2.8136	4660.15	4661.15	1.00	1.29	1.29	1.29	78	118.7
11-Jan-16	9:35	Rainy	014380	2.7975	2.8020	4685.15	4686.15	1.00	1.18	1.18	1.18	71	63.5
11-Jan-16	13:00	Rainy	014500	2.8069	2.8108	4686.15	4687.15	1.00	1.21	1.21	1.21	73	53.7
11-Jan-16	14:12	Rainy	014484	2.8000	2.8038	4687.15	4688.15	1.00	1.21	1.21	1.21	73	52.3
16-Jan-16	8:55	Cloudy	014473	2.7899	2.7953	4712.15	4713.15	1.00	1.13	1.13	1.13	68	80.0
16-Jan-16	10:26	Cloudy	014470	2.8081	2.8147	4713.15	4714.15	1.00	1.13	1.13	1.13	68	97.7
16-Jan-16	13:00	Cloudy	014467	2.7745	2.7856	4714.15	4715.15	1.00	1.24	1.24	1.24	75	148.9
22-Jan-16	8:40	Rainy	014403	2.7949	2.7967	4739.15	4740.15	1.00	1.22	1.22	1.22	73	24.6
22-Jan-16	10:15	Rainy	014406	2.7806	2.7843	4740.15	4741.15	1.00	1.22	1.25	1.23	74	49.9
22-Jan-16	13:00	Rainy	014409	2.7895	2.7972	4741.15	4742.15	1.00	1.25	1.25	1.25	75	102.7



Location: CMA4a - SPCA

Report on 24-hour TSP monitoring

Action Level ( $\mu\text{g}/\text{m}^3$ ) - 171.2  
Limit Level ( $\mu\text{g}/\text{m}^3$ ) - 260

Date	Sampling Time	Weather Condition	Filter paper no.	Filter Weight, g		Elapse Time, hr		Sampling Time, hr	Flow Rate, $\text{m}^3/\text{min}$			Total Volume, $\text{m}^3$	TSP Level, $\mu\text{g}/\text{m}^3$
				Initial	Final	Initial	Final		Initial, $Q_{si}$	Final, $Q_{sf}$	Average		
29-Dec-15	8:00	Cloudy	014255	2.8650	3.1169	21392.00	21416.00	24.00	1.33	1.33	1.33	1909	131.9
4-Jan-16	8:00	Cloudy	014366	2.8351	2.9713	21419.00	21443.00	24.00	1.32	1.32	1.32	1895	71.9
9-Jan-16	8:00	Cloudy	014374	2.8135	2.9867	21446.00	21470.00	24.00	1.32	1.32	1.32	1903	91.0
15-Jan-16	8:00	Rainy	014339	2.8324	2.9450	21473.00	21497.00	24.00	1.32	1.32	1.32	1906	59.1
21-Jan-16	8:00	Cloudy	014478	2.7803	2.8979	21500.00	21524.00	24.00	1.27	1.28	1.28	1837	64.0

Report on 1-hour TSP monitoring

Action Level ( $\mu\text{g}/\text{m}^3$ ) - 312.5  
Limit Level ( $\mu\text{g}/\text{m}^3$ ) - 500

Date	Sampling Time	Weather Condition	Filter paper no.	Filter Weight, g		Elapse Time, hr		Sampling Time, hr	Flow Rate, $\text{m}^3/\text{min}$			Total Volume, $\text{m}^3$	TSP Level, $\mu\text{g}/\text{m}^3$
				Initial	Final	Initial	Final		Initial, $Q_{si}$	Final, $Q_{sf}$	Average		
30-Dec-15	8:09	Cloudy	014095	2.8832	2.8914	21416.00	21417.00	1.00	1.33	1.33	1.33	80	103.0
30-Dec-15	10:41	Cloudy	014342	2.8165	2.8264	21417.00	21418.00	1.00	1.33	1.33	1.33	80	124.4
30-Dec-15	14:38	Cloudy	014133	2.7929	2.8016	21418.00	21419.00	1.00	1.33	1.33	1.33	80	109.3
5-Jan-16	9:21	Rainy	014129	2.7824	2.7925	21443.00	21444.00	1.00	1.32	1.32	1.32	79	128.0
5-Jan-16	10:26	Rainy	014124	2.8033	2.8128	21444.00	21445.00	1.00	1.32	1.32	1.32	79	120.4
5-Jan-16	13:00	Rainy	014383	2.8072	2.8152	21445.00	21446.00	1.00	1.32	1.32	1.32	79	101.4
11-Jan-16	9:35	Rainy	014497	2.7939	2.7989	21470.00	21471.00	1.00	1.32	1.32	1.32	79	63.1
11-Jan-16	13:00	Rainy	014499	2.8095	2.8136	21471.00	21472.00	1.00	1.32	1.32	1.32	79	51.8
11-Jan-16	14:05	Rainy	014356	2.7949	2.8023	21472.00	21473.00	1.00	1.32	1.32	1.32	79	93.4
16-Jan-16	8:59	Cloudy	014504	2.7911	2.7989	21497.00	21498.00	1.00	1.32	1.32	1.32	79	98.3
16-Jan-16	10:22	Cloudy	014508	2.8019	2.8136	21498.00	21499.00	1.00	1.32	1.32	1.32	79	147.5
16-Jan-16	13:00	Cloudy	014512	2.7922	2.8028	21499.00	21500.00	1.00	1.32	1.32	1.32	79	133.6
22-Jan-16	8:44	Rainy	014521	2.8639	2.8676	21524.00	21525.00	1.00	1.28	1.28	1.28	77	48.3
22-Jan-16	10:18	Rainy	014391	2.8259	2.8285	21525.00	21526.00	1.00	1.28	1.28	1.28	77	33.9
22-Jan-16	13:00	Rainy	014395	2.8083	2.8204	21526.00	21527.00	1.00	1.28	1.28	1.28	77	157.9



Location: CMA5b - Pedestrian Plaza

Report on 24-hour TSP monitoring

Action Level ( $\mu\text{g}/\text{m}^3$ ) - 181

Limit Level ( $\mu\text{g}/\text{m}^3$ ) - 260

Date	Sampling Time	Weather Condition	Filter paper no.	Filter Weight, g		Elapse Time, hr		Sampling Time, hr	Flow Rate, $\text{m}^3/\text{min}$			Total Volume, $\text{m}^3$	TSP Level, $\mu\text{g}/\text{m}^3$
				Initial	Final	Initial	Final		Initial, $Q_{si}$	Final, $Q_{sf}$	Average		
29-Dec-15	8:00	Cloudy	014284	2.8777	3.0825	5922.03	5946.03	24.00	0.81	0.81	0.81	1165	175.7
4-Jan-16	8:00	Cloudy	014134	2.7954	2.9188	5949.03	5973.03	24.00	0.80	0.80	0.80	1147	107.6
11-Jan-16	15:20	Rainy	014476	2.7770	2.8254	5979.03	6003.03	24.00	0.73	0.74	0.74	1060	45.6
15-Jan-16	8:00	Rainy	014501	2.7884	2.8376	6003.03	6027.03	24.00	0.74	0.74	0.74	1064	46.3
22-Jan-16	14:00	Cloudy	014464	2.7580	2.8283	6047.07	6071.07	24.00	0.81	0.83	0.82	1182	59.5

Remarks: Due to interruption of electricity, the 24hr TSP was rescheduled from 9 and 21 January 2016 to 11 and 22 January 2016 respectively.

Report on 1-hour TSP monitoring

Action Level ( $\mu\text{g}/\text{m}^3$ ) - 332

Limit Level ( $\mu\text{g}/\text{m}^3$ ) - 500

Date	Sampling Time	Weather Condition	Filter paper no.	Filter Weight, g		Elapse Time, hr		Sampling Time, hr	Flow Rate, $\text{m}^3/\text{min}$			Total Volume, $\text{m}^3$	TSP Level, $\mu\text{g}/\text{m}^3$
				Initial	Final	Initial	Final		Initial, $Q_{si}$	Final, $Q_{sf}$	Average		
30-Dec-15	8:41	Cloudy	014096	2.8800	2.8857	5946.03	5947.03	1.00	0.74	0.74	0.74	45	128.0
30-Dec-15	9:45	Cloudy	014341	2.8254	2.8316	5947.03	5948.03	1.00	0.74	0.74	0.74	45	139.2
30-Dec-15	13:00	Cloudy	014345	2.8339	2.8407	5948.03	5949.03	1.00	0.78	0.78	0.78	47	146.0
5-Jan-16	9:08	Rainy	014130	2.8063	2.8116	5973.03	5974.03	1.00	0.73	0.73	0.73	44	121.3
5-Jan-16	10:15	Rainy	014125	2.8053	2.8111	5974.03	5975.03	1.00	0.73	0.73	0.73	44	132.7
5-Jan-16	13:00	Rainy	014382	2.8059	2.8119	5975.03	5976.03	1.00	0.73	0.73	0.73	44	137.3
11-Jan-16	8:34	Rainy	014496	2.7943	2.7963	5976.03	5977.03	1.00	0.80	0.80	0.80	48	41.6
11-Jan-16	10:45	Rainy	014494	2.7957	2.8004	5977.03	5978.03	1.00	0.87	0.87	0.87	52	90.1
11-Jan-16	13:30	Rainy	014485	2.8273	2.8316	5978.03	5979.03	1.00	0.73	0.73	0.73	44	97.6
16-Jan-16	8:40	Cloudy	014503	2.7979	2.8033	6027.03	6028.03	1.00	0.74	0.74	0.74	44	122.1
16-Jan-16	10:09	Cloudy	014507	2.7989	2.8047	6028.03	6029.03	1.00	0.74	0.74	0.74	44	131.1
16-Jan-16	13:00	Cloudy	014511	2.7986	2.8099	6029.03	6030.03	1.00	0.74	0.74	0.74	44	255.4
22-Jan-16	8:30	Rainy	014520	2.8739	2.8752	6044.07	6045.07	1.00	0.74	0.74	0.74	45	29.1
22-Jan-16	10:05	Rainy	014390	2.8280	2.8303	6045.07	6046.07	1.00	0.81	0.81	0.81	49	47.2
22-Jan-16	13:00	Rainy	014394	2.8188	2.8207	6046.07	6047.07	1.00	0.74	0.74	0.74	45	42.5



Location: CMA6a - WD2 PRE Office

Report on 24-hour TSP monitoring

Action Level - 187.3  $\mu\text{g}/\text{m}^3$   
Limit Level - 260  $\mu\text{g}/\text{m}^3$

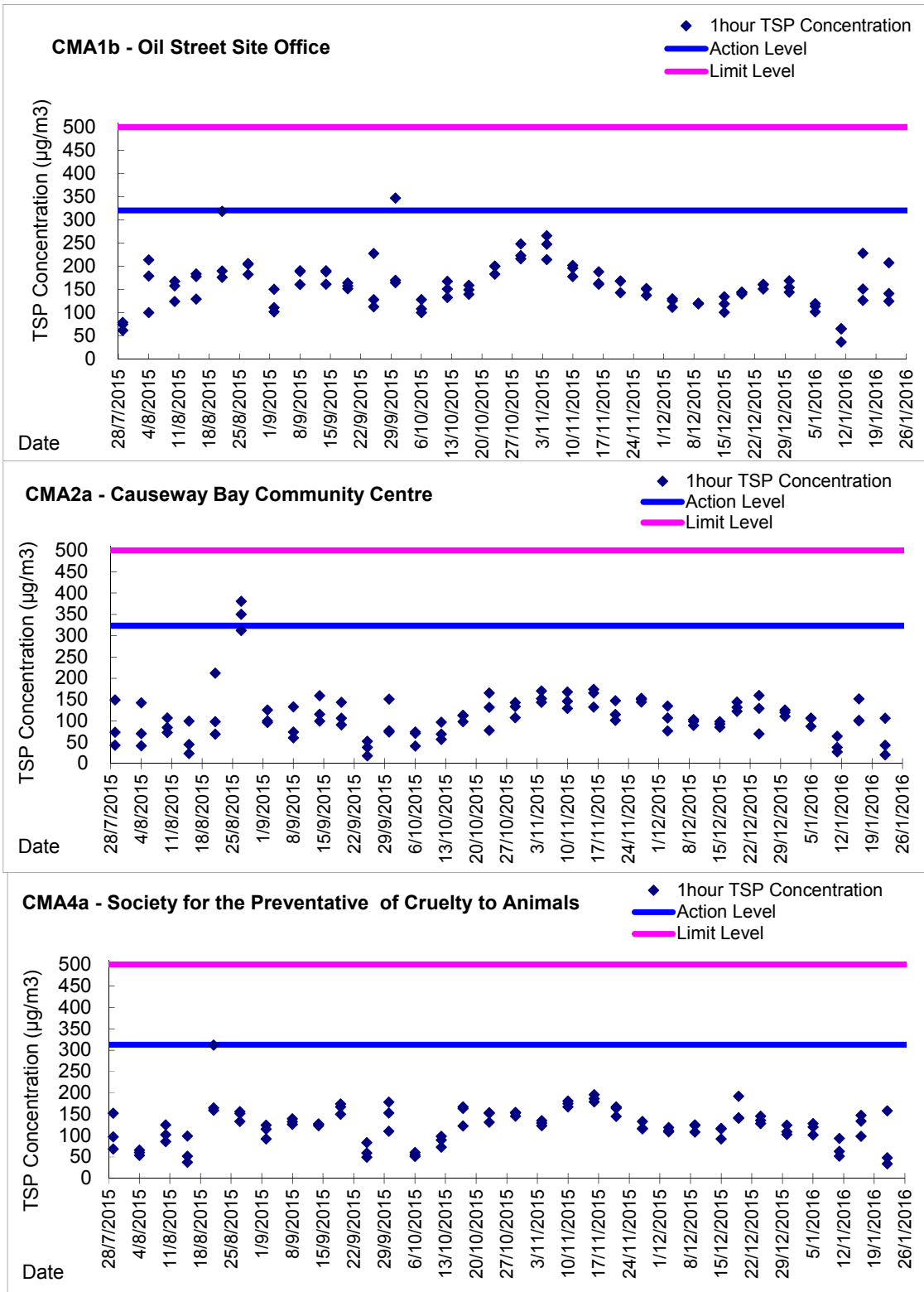
Date	Sampling Time	Weather Condition	Filter paper no.	Filter Weight, g		Elapse Time, hr		Sampling Time, hr	Flow Rate, $\text{m}^3/\text{min}$			Total Volume, $\text{m}^3$	TSP Level, $\mu\text{g}/\text{m}^3$
				Initial	Final	Initial	Final		Initial, $Q_{si}$	Final, $Q_{sf}$	Average		
29-Dec-15	8:00	Cloudy	014260	2.8895	3.0876	20972.29	20996.29	24.00	1.21	1.21	1.21	1742	113.7
4-Jan-16	8:00	Cloudy	014363	2.8034	2.9580	20999.29	21023.29	24.00	1.20	1.20	1.20	1724	89.7
9-Jan-16	8:00	Cloudy	014377	2.8135	3.0566	21026.29	21050.29	24.00	1.21	1.20	1.20	1734	140.2
15-Jan-16	8:00	Rainy	014481	2.7994	2.8940	21053.29	21077.29	24.00	1.21	1.21	1.21	1738	54.4
21-Jan-16	8:00	Cloudy	014514	2.7900	2.9128	21080.29	21104.29	24.00	1.21	1.21	1.21	1743	70.5

Report on 1-hour TSP monitoring

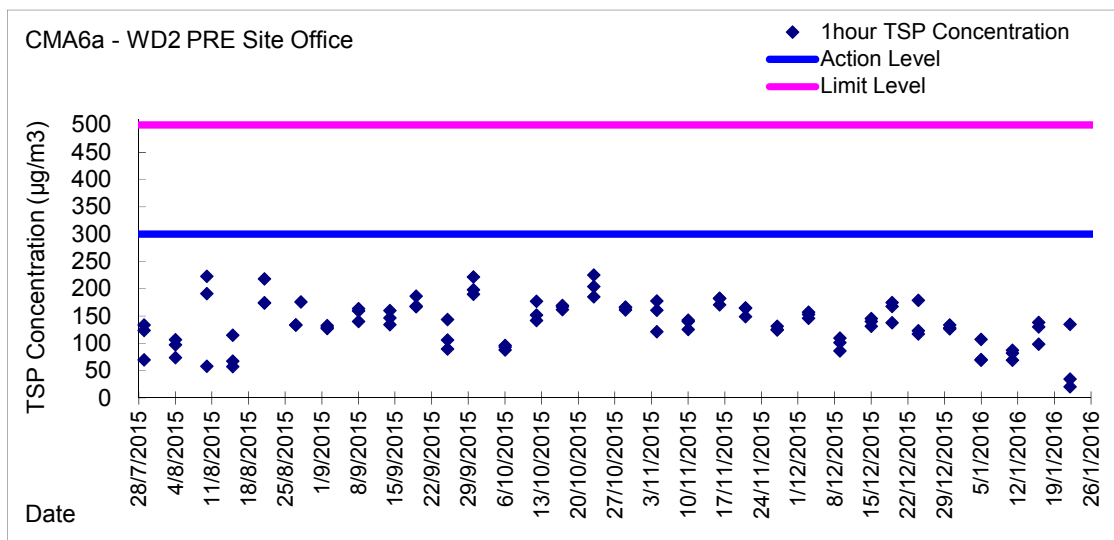
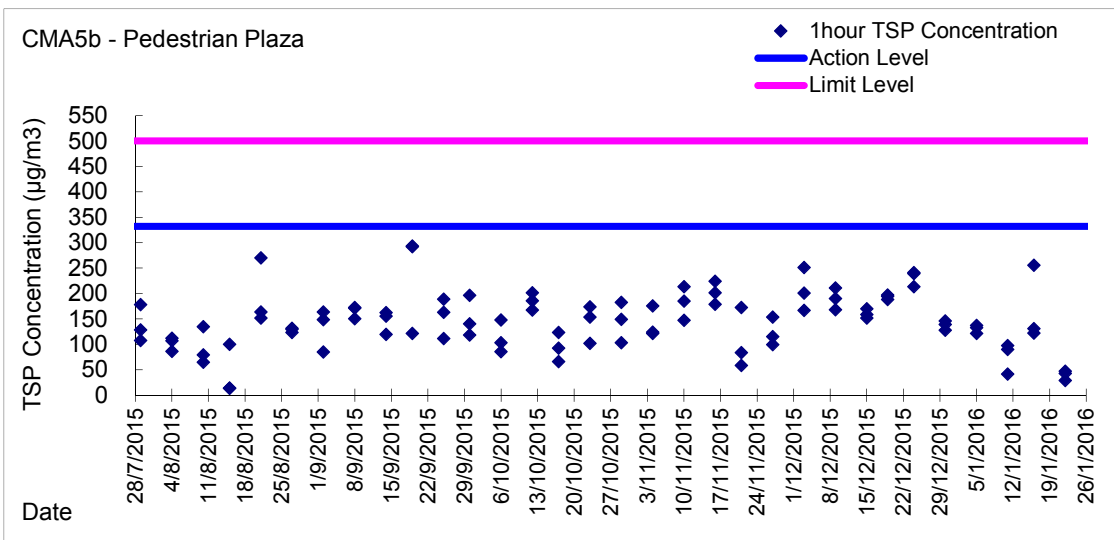
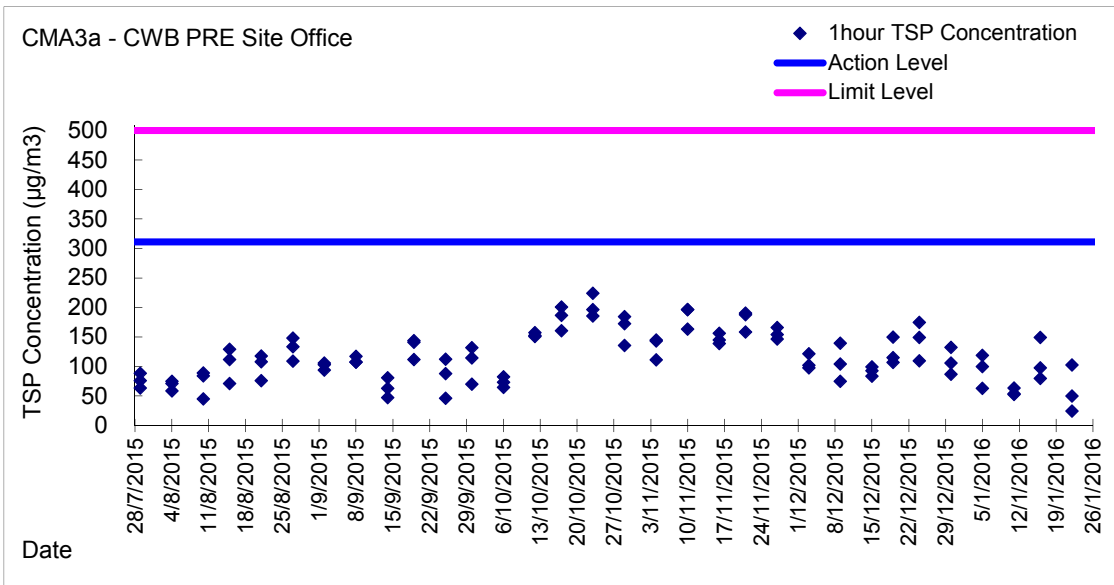
Action Level - 300.1  $\mu\text{g}/\text{m}^3$   
Limit Level - 500  $\mu\text{g}/\text{m}^3$

Date	Sampling Time	Weather Condition	Filter paper no.	Filter Weight, g		Elapse Time, hr		Sampling Time, hr	Flow Rate, $\text{m}^3/\text{min}$			Total Volume, $\text{m}^3$	TSP Level, $\mu\text{g}/\text{m}^3$
				Initial	Final	Initial	Final		Initial, $Q_{si}$	Final, $Q_{sf}$	Average		
30-Dec-15	8:25	Cloudy	014357	2.8035	2.8132	20996.29	20997.29	1.00	1.21	1.21	1.21	73	133.6
30-Dec-15	9:35	Cloudy	014360	2.7959	2.8052	20997.29	20998.29	1.00	1.21	1.21	1.21	73	128.1
30-Dec-15	10:40	Cloudy	014362	2.8024	2.8116	20998.29	20999.29	1.00	1.21	1.21	1.21	73	126.7
5-Jan-16	8:50	Rainy	014367	2.8182	2.8255	21023.29	21024.29	1.00	1.76	1.76	1.76	106	69.2
5-Jan-16	10:00	Rainy	014370	2.8284	2.8358	21024.29	21025.29	1.00	1.76	1.76	1.76	106	70.1
5-Jan-16	13:00	Rainy	014347	2.8112	2.8225	21025.29	21026.29	1.00	1.76	1.76	1.76	106	107.1
11-Jan-16	8:20	Rainy	014379	2.8205	2.8255	21050.29	21051.29	1.00	1.20	1.20	1.20	72	69.3
11-Jan-16	10:56	Rainy	014493	2.7860	2.7923	21051.29	21052.29	1.00	1.20	1.20	1.20	72	87.3
11-Jan-16	13:00	Rainy	014486	2.8148	2.8207	21052.29	21053.29	1.00	1.20	1.20	1.20	72	81.8
16-Jan-16	8:06	Cloudy	014474	2.8196	2.8296	21077.29	21078.29	1.00	1.21	1.21	1.21	72	138.3
16-Jan-16	9:56	Cloudy	014471	2.7911	2.7982	21078.29	21079.29	1.00	1.21	1.21	1.21	72	98.2
16-Jan-16	11:00	Cloudy	014468	2.7894	2.7988	21079.29	21080.29	1.00	1.21	1.21	1.21	72	130.0
22-Jan-16	8:25	Rainy	014402	2.8027	2.8052	21104.29	21105.29	1.00	1.21	1.21	1.21	73	34.4
22-Jan-16	9:50	Rainy	014405	2.7885	2.7900	21105.29	21106.29	1.00	1.21	1.21	1.21	73	20.6
22-Jan-16	11:00	Rainy	014408	2.7867	2.7965	21106.29	21107.29	1.00	1.21	1.21	1.21	73	134.7

Graphic Presentation of 1 hour TSP Result



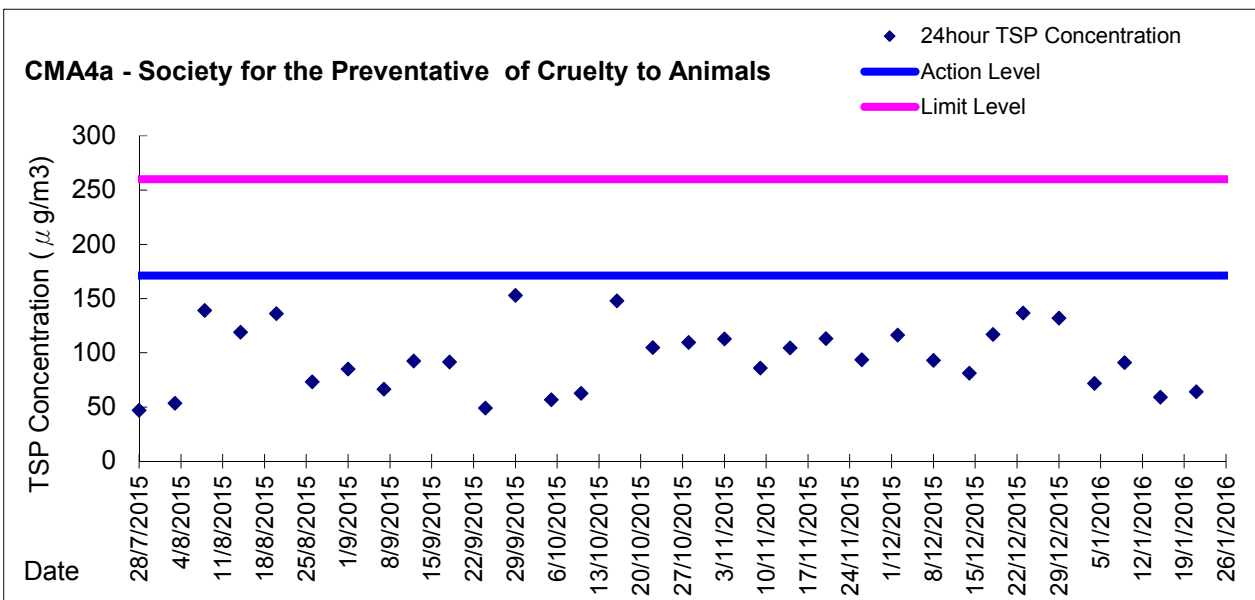
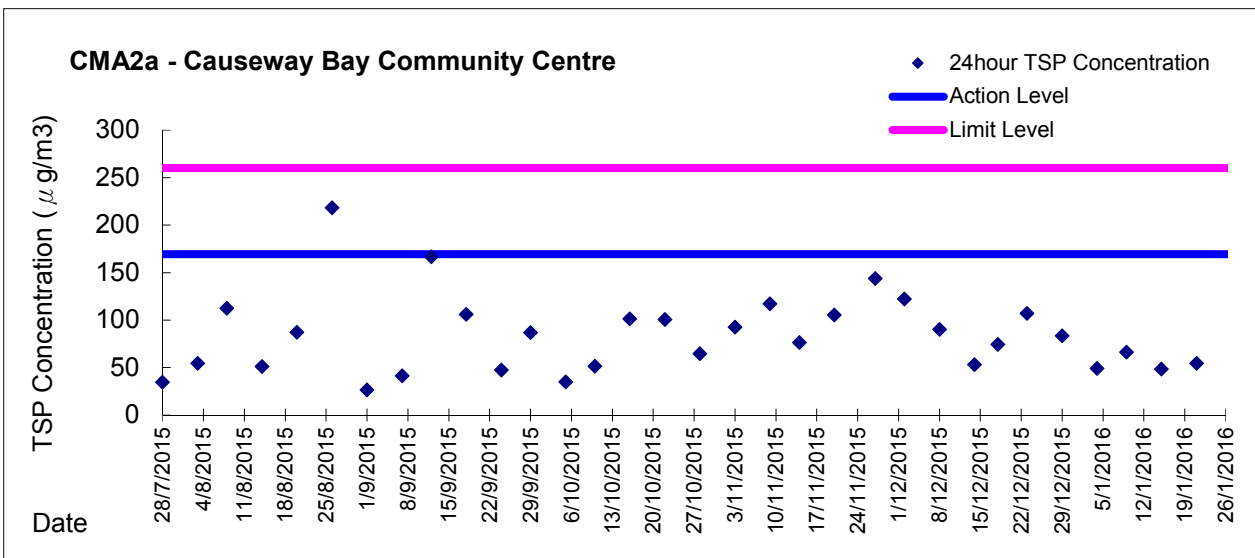
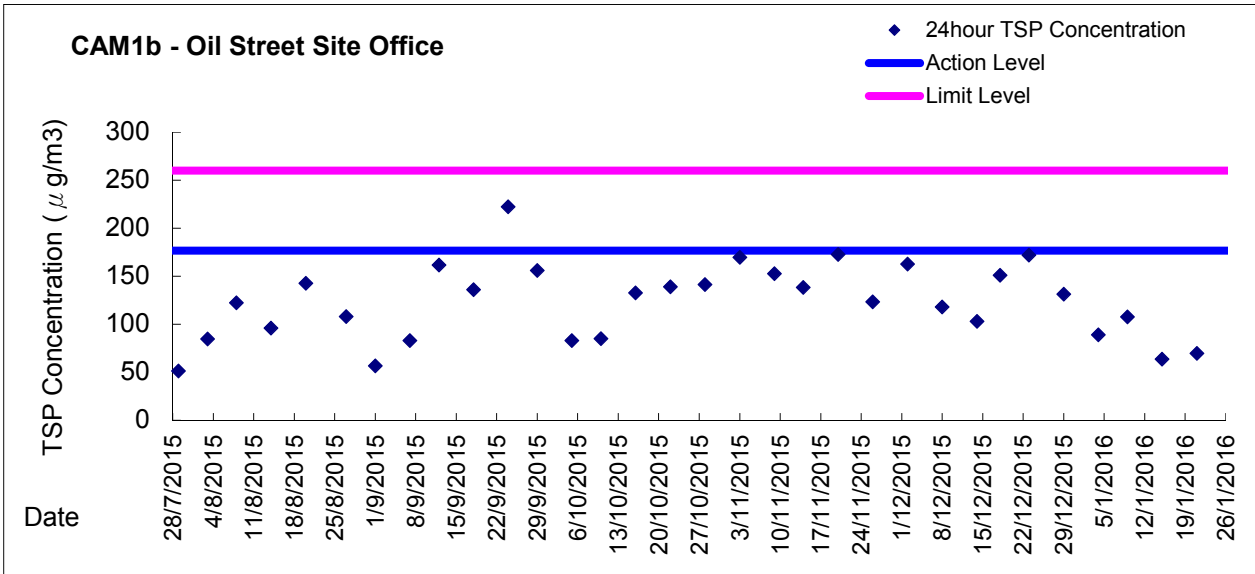
Graphic Presentation of 1 hour TSP Result







Graphic Presentation of 24 hour TSP Result





Graphic Presentation of 24 hour TSP Result

